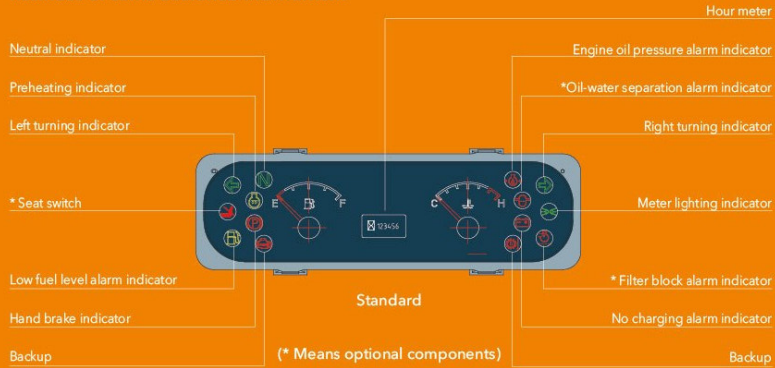


RELIABLE SPECIAL DESIGNED INSTRUMENT



■ Reliable special meter displays the whole truck's working condition, fault detect and other important information completely which makes the operator master the whole truck condition directly and conveniently.

Standard configuration

| | |
|-----------------------------------|---------------------------------------|
| Hour meter | Overhead guard |
| Horn | Standard fork |
| Oil pressure alarm | Neutral gear switch |
| Control valve | Hydraulic circuit oil filter |
| Wholly hydraulic-powered steering | Electro-hydraulic changing-over |
| Rubber pad | Intelligent shift |
| Backrest | Speed-limiting valve |
| Rear view mirror | Oil level gauge |
| Front combined lamp (LED light) | Charging indicator |
| Transmission oil filter | Wide view mast |
| Engine flame out device | Air intaking device |
| Ratchet type parking brake | Durable tire with decorative pattern |
| Water temperature meter | Lifting and tilting operating handles |
| Driver's tools | Traction pin |
| Rear combined lamp(LED) | Semi-suspension seat |
| Reversing buzzer | Hydraulic oil dipstick |
| Tilt-lock valve | Overhead guard rain cover |
| Tilt adjustable steering column | Torque converter oil dipstick |
| Back view mirror | Combined instrument |

Optional

| | |
|--|---|
| Driver's cab | User-specified color |
| Warning light | Optional attachments |
| High air exhausting device | Sling |
| Double air cleaner | Full LED light ass'y |
| Suspension seat | Power switch |
| Fork extension | Reversing voice speaker |
| Heater | Universal key |
| Solid tyre | Overspeed 10km/h alarm |
| Widen fork carriage | Electric fan |
| Wind shield | OPS(Travelling function and loading function) |
| Purifying muffler | |
| Fire extinguisher muffler | |
| Fire extinguisher | |
| Rear working light | |
| Air conditioner (certain type) | |
| OPS(travelling function) | |
| Torque converter oil temperature meter | |
| Tilting cylinder sleeve | |
| Steering cylinder sleeve | |



HELI 安徽合力股份有限公司
ANHUI HELI CO., LTD.

ADD: NO.668 Fangxing Street, Economical Development Zone, Hefei, P.R.China
TEL: (86 551) 63639068, 63639258, 63639358, 63662105
FAX: (86 551) 63639966
WEBSITE: <http://www.helichina.net>

AUTHORIZED DEALER

2015 heli copyright
Catalog No.2015-03 HELI Print

* Our products are subject to improvements and changes without notice.

5-10 t

G SERIES INTERNAL COMBUSTION COUNTERBALANCED FORKLIFT TRUCK



G series / INTELLIGENT ENVIRONMENT-FRIENDLY



G SERIES INTERNAL COMBUSTION
COUNTERBALANCED FORKLIFT TRUCK

5-10 t

Gseries / INTELLIGENT
ENVIRONMENT-FRIENDLY

Technical features remarkably improved

Damping

- > With suspension damping structure on overhead guard(cab) and optimized design for the transmission, the whole trucks's vibration reduced a lot and relieve driver's fatigue greatly.

Noise reduction

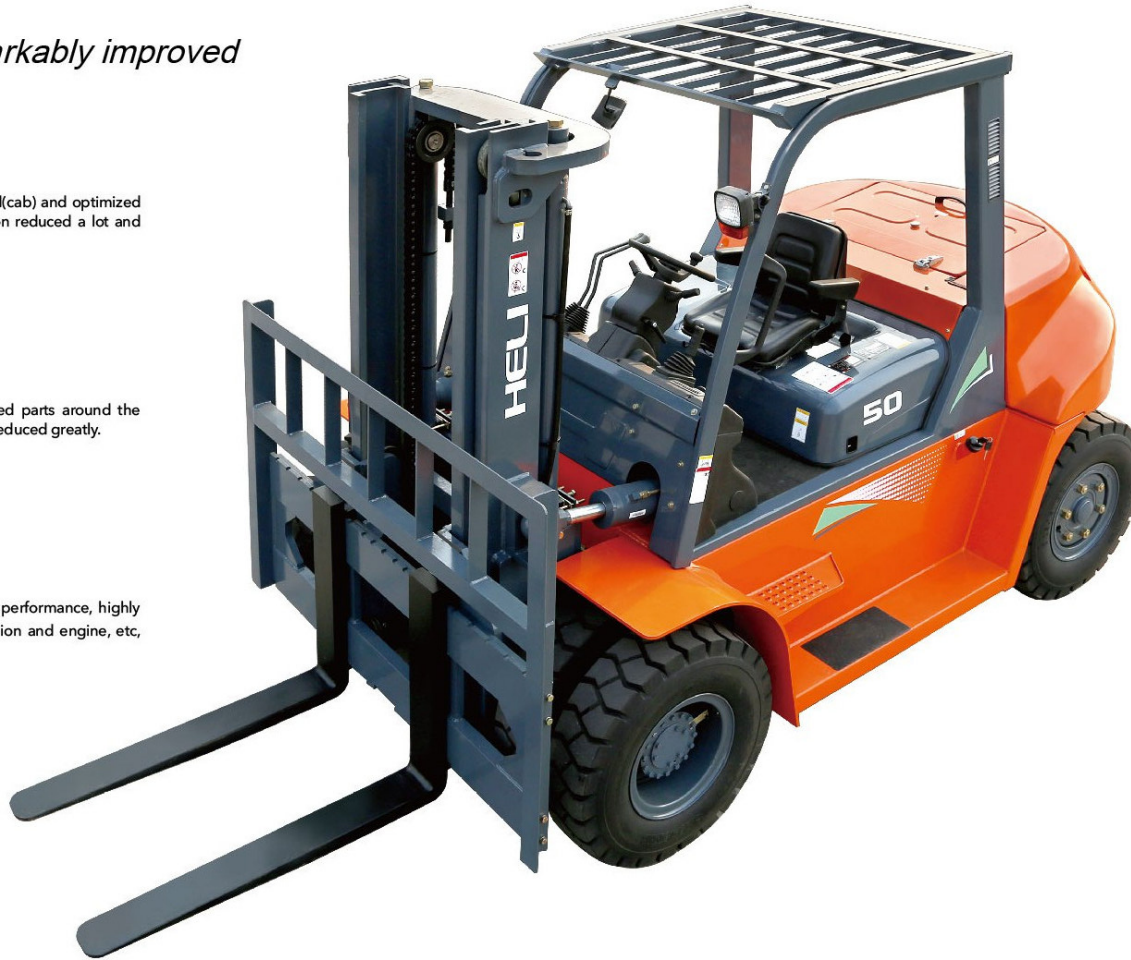
- > Equipped with fully sealed cab and optimize designed parts around the engine, noise nearby ear and the truck sound level are reduced greatly.

Heat dissipation

- > With the optimized cooling system and great cooling performance, highly improved the reliability and durability of the transmission and engine, etc, many key parts.

Energy efficiency

- > With optimized hydraulic system, the truck is more energy-efficient and lower fuel consumption.



Comfort

- > Man-machine engineering design improves operation comfort; wide view lifting system improves vision.

Intelligent gear shifting

- > With electronic-hydraulic reversing system as standard configuration, make operation more light and easy; The updated new intelligent gear shifting system could avoid starting with second gear, improves the transmission box's reliability.

Maintainability

- > Wider internal space, more reasonable parts layout and 80°hood opening angle make maintenance easy.

Reliability

- > Key parts like frame and mast apply CAE top-down design to improve their strength and make the truck tough.



Independent integrated electric cabinet



LED signal (standard configuration)



Ratchet type parking brake



Intelligent gear shifting



Steering wheel lock mechanism



Locked fuel tank cover



Folder



G SERIES INTERNAL COMBUSTION
COUNTERBALANCED FORKLIFT TRUCK

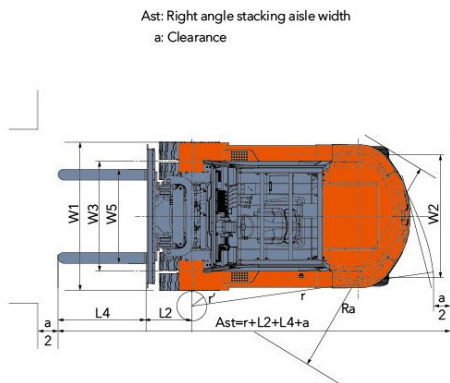
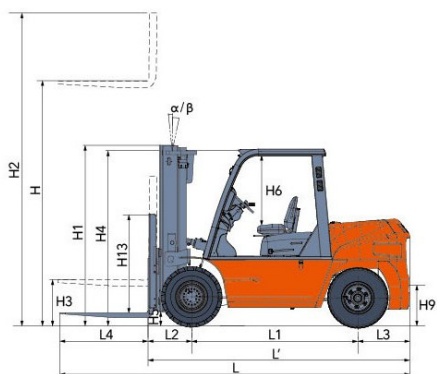
5-10 t

Manufacturer and technical parameters

| Characteristics | | | | | | | | |
|--|---|------------------|------------|---|-------------|-------------|--------------|-------------|
| 1.01 | Manufacturer | | | HELI | | | | |
| 1.02 | Model | | | CPCD50 | CPCD60 | CPCD70 | CPCD85 | CPCD100 |
| 1.03 | Power type | | | Diesel | | | | |
| 1.04 | Rated capacity | Q | kg | 5000 | 6000 | 7000 | 8500 | 10000 |
| 1.05 | Load center | c | mm | 600 | | | | |
| 1.06 | Driving mode | | | Sit-on type | | | | |
| Dimensions | | | | | | | | |
| 2.01 | Mast height, extended (with backrest) | H2 | mm | 4400 | 4400 | 4400 | 4420 | 4415 |
| 2.02 | Max. fork height | H | mm | 3000 | 3000 | 3000 | 3000 | 3000 |
| 2.03 | Mast height, lowered | H1 | mm | 2500 | 2500 | 2500 | 2700 | 2850 |
| 2.04 | Free lift | H3 | mm | 200 | 200 | 200 | 200 | 200 |
| 2.05 | Backrest height (calculated from the fork surface) | H13 | mm | 1360 | 1350 | 1345 | 1360 | 1345 |
| 2.06 | Overhead guard clearance (from face of seat) | H6 | mm | 1060 | 1060 | 1060 | 1060 | 1060 |
| 2.07 | Overhead guard height | H4 | mm | 2450 | 2450 | 2450 | 2560 | 2560 |
| 2.08 | Overall length (with forks) | L | mm | 4710 | 4790 | 4840 | 5180 | 5430 |
| 2.09 | Overall length (without forks) | L' | mm | 3490 | 3570 | 3620 | 3955 | 4210 |
| 2.10 | Front overhang | L2 | mm | 590 | 595 | 600 | 707 | 722 |
| 2.11 | Rear overhang | L3 | mm | 600 | 675 | 720 | 755 | 715 |
| 2.12 | Wheel base | L1 | mm | 2300 | 2300 | 2300 | 2500 | 2775 |
| 2.13 | Traction pin center height | H9 | mm | 410 | 410 | 410 | 520 | 520 |
| 2.14 | Min. Ground clearance (from bottom of mast) | H5 | mm | 200 | 200 | 200 | 250 | 250 |
| 2.15 | Truck body width | W1 | mm | 2045 | 2045 | 2045 | 2165 | 2165 |
| 2.16 | Lateral fork adjustment (outside of fork) (max./min.) | W6 | mm | 300-1835 | 300-1835 | 300-1835 | 348-1944 | 420-2060 |
| 2.17 | Front tread | W3 | mm | 1520 | 1520 | 1520 | 1600 | 1600 |
| 2.18 | Rear tread | W2 | mm | 1700 | 1700 | 1700 | 1700 | 1700 |
| 2.19 | Min. Turning radius (external) | r | mm | 3240 | 3300 | 3370 | 3650 | 3900 |
| 2.20 | Min. Turning radius (internal) | r' | mm | 200 | 200 | 200 | 200 | 200 |
| 2.21 | Min. Intersecting aisle | Ra | mm | 3200 | 3260 | 3330 | 3590 | 3860 |
| 2.23 | Mast tilting angle (forward /rear) | α / β | $^{\circ}$ | 6/12 | 6/12 | 6/12 | 6/12 | 6/12 |
| 2.24 | Fork size | L4 | mm | 55X1220X150 | 60X1220X150 | 65X1220X150 | 70X1220X170 | 80X1220X175 |
| Tyre | | | | | | | | |
| 3.01 | Wheel number (front/rear) | | | 4X/2 | | | | |
| 3.02 | Tyre type (front/rear) | | | Pneumatic tyre | | | | |
| 3.03 | Tyre size (front) | | | 8.25-15-14PR | | | 9.00-20-14PR | |
| 3.04 | Tyre size (rear) | | | 8.25-15-14PR | | | 9.00-20-14PR | |
| Specifications of the brake and transmission devices | | | | | | | | |
| 4.01 | Battery (voltage/capacity) | V/Ah | | 2X12/80 | | | | |
| 4.02 | Service brake | | | Powered brake-pedal type | | | | |
| 4.03 | Parking brake | | | Mechanical-hand brake lever type | | | | |
| 4.04 | Oil tank capacity | L | | 160 | | | | |
| 4.05 | Transmission type | | | Intelligent gear shifting | | | | |
| 4.06 | Transmission number of speed (fwd/bwd) | | | 2/2 | | | | |
| Truck specifications | | | | | | | | |
| 5.01 | Max. Travelling speed (loaded/unloaded) | km/h | | 24/29 | 24/29 | 24/29 | 24/28 | 24/28 |
| 5.02 | Lifting speed (loaded/unloaded) | mm/s | | 510/530 | 510/530 | 500/530 | 390/420 | 330/350 |
| 5.03 | Lowering speed (loaded/unloaded) | mm/s | | WITHOUT LOAD \geq 300 WITH FULL LOAD \leq 600 | | | | |
| 5.04 | Max. Draw bar (loaded) | KN | | 63 | 63 | 62 | 60 | 58 |
| 5.05 | Max. Gradeability (loaded/unloaded) | % | | 38/19 | 35/19 | 32/19 | 23/20 | 21/20 |
| 5.06 | Weight (oil included) | kg | | 8300 | 9050 | 9650 | 11550 | 12660 |
| 5.07 | Axle load (loaded) front/rear | kg | | 11940/1360 | 13400/1650 | 14500/2150 | 17845/2205 | 20167/2493 |
| 5.08 | Axle load (unloaded) front/rear | kg | | 4130/4170 | 4060/4990 | 3870/5780 | 5082/6468 | 5570/7090 |
| Engine specifications | | | | | | | | |
| 6.01 | Engine manufacturer /mode | | | XICHAI CA6110 | | | | |
| 6.02 | Engine rated power/rotational speed | \leq w/rpm | | 83/2000 | | | | |
| 6.03 | Engine rated torque/rotational speed | \leq m/rpm | | 450/1400-1500 | | | | |
| 6.04 | Cylinder number | | | 6 | | | | |
| 6.05 | Engine displacement | L | | 7.127 | | | | |

Optional engine model and truck main specifications

| Truck specifications | | CPCD50 | CPCD60 | CPCD70 | CPCD85 | CPCD100 | CPCD50 | CPCD60 | CPCD70 | CPCD85 | CPCD100 | CPCD50 | CPCD60 | CPCD70 | CPCD85 | CPCD100 | CPCD50 | CPCD60 | CPCD70 | CP(Q)(Y)D50 | CP(Q)(Y)D60 | CP(Q)(Y)D70 |
|--|--------|---|------------|------------|------------|------------|------------|------------|----------------|------------|------------|------------|------------|------------|------------|---------------|------------|------------|------------------|-------------|-------------|-------------|
| Manufacturer | | | | | | | | | | | | | | | | | | | | | | |
| Max Travelling speed (loaded/unloaded) | km/h | 26/30 | 26/30 | 26/30 | 26/30 | 26/30 | 26/30 | 26/30 | 26/30 | 26/30 | 26/30 | 25/29 | 25/29 | 25/29 | 25/29 | 25/29 | 26/30 | 26/30 | 26/30 | 28/30 | 28/30 | 28/30 |
| Lifting speed (loaded/unloaded) | mm/s | 530/550 | 530/550 | 510/540 | 390/420 | 330/350 | 550/570 | 550/570 | 550/570 | 430/450 | 350/370 | 510/550 | 510/550 | 500/550 | 400/430 | 330/350 | 450/470 | 440/470 | 420/460 | 425/435 | 425/435 | 425/435 |
| Lowering speed (loaded/unloaded) | mm/s | WITHOUT LOAD ≥ 300 WITH FULL LOAD ≤ 600 | | | | | | | | | | | | | | | | | | | | |
| Max. Draw bar (loaded) | KN | 60 | 60 | 60 | 60 | 58 | 60 | 60 | 60 | 60 | 58 | 60 | 60 | 60 | 60 | 58 | 42 | 40 | 40 | 48 | 48 | 47 |
| Max. Gradeability (loaded/unloaded) | % | 34/19 | 31/19 | 29/19 | 23/20 | 21/20 | 35/19 | 32/19 | 30/19 | 27/20 | 22/20 | 34/19 | 31/19 | 29/19 | 23/20 | 21/20 | 23/19 | 20/19 | 20/19 | 38/19 | 35/19 | 31/19 |
| Weight (oil included) | kg | 8150 | 8900 | 9500 | 11400 | 12510 | 8150 | 8900 | 9500 | 11400 | 12510 | 8300 | 9050 | 9650 | 11550 | 12660 | 8300 | 9050 | 9650 | 7980 | 8730 | 9330 |
| Axle load (loaded) front/rear | kg | 11830/1320 | 13330/1570 | 14450/2050 | 17750/2150 | 20030/2480 | 11830/1320 | 13330/1570 | 14450/2050 | 17750/2150 | 20030/2480 | 11940/1360 | 13400/1650 | 14500/2150 | 17845/2205 | 20167/2493 | 11940/1360 | 13400/1650 | 14550/2150 | 11620/1360 | 13080/1650 | 14180/2150 |
| Axle load (unloaded) front/rear | kg | 4050/4100 | 4005/4895 | 3900/5600 | 5360/6040 | 5510/7000 | 4050/4100 | 4005/4895 | 3900/5600 | 5360/6040 | 5510/7000 | 4130/4170 | 4060/4990 | 3870/5780 | 5082/6468 | 5570/7090 | 4130/4170 | 4060/4990 | 3870/5780 | 3810/4170 | 3740/4990 | 3550/5780 |
| Engine specifications | | | | | | | | | | | | | | | | | | | | | | |
| Engine manufacturer /mode | | Perkins 1104D-44TA | | | | | | | Cummins QSB4.5 | | | | | | | ISUZU 6BG1 | | | Mitsubishi S6S-T | | | GM4.3 |
| Engine rated power/rotational speed | Kw/rpm | 83/2200 | | | | | | | 82/2200 | | | | | | | 82/2000 | | | 63.9/2300 | | | 76/2300 |
| Engine rated torque/rotational speed | Nm/rpm | 418/1400 | | | | | | | 488/1500 | | | | | | | 415/1400-1600 | | | 285/1700 | | | 324/1700 |
| Cylinder number | | 4 | | | | | | | 4 | | | | | | | 6 | | | 6 | | | 6 |
| Engine displacement | L | 4.4 | | | | | | | 4.5 | | | | | | | 6.494 | | | 4.29 | | | 4.3 |



Ast: Right angle stacking aisle width
a: Clearance

5-7t WIDE VIEW MAST

| Mast model | Max fork height (mm) | Load capacity (load center 600mm) | | | Mast height, lowered (mm) | | Service weight (kg) | | | Mast tilting angle (°) α / β |
|------------|----------------------|-----------------------------------|--------|--------|---------------------------|--------|---------------------|--------|------|------------------------------|
| | | CPCD50 | CPCD60 | CPCD70 | CPCD50/60/70 | CPCD50 | CPCD60 | CPCD70 | | |
| M200 | 2000 | 5000 | 6000 | 7000 | 2000 | 8300 | 9050 | 9650 | 6/12 | |
| M250 | 2500 | 5000 | 6000 | 7000 | 2250 | 8360 | 9110 | 9710 | 6/12 | |
| M270 | 2700 | 5000 | 6000 | 7000 | 2350 | 8390 | 9140 | 9740 | 6/12 | |
| M300 | 3000 | 5000 | 6000 | 7000 | 2500 | 8440 | 9190 | 9790 | 6/12 | |
| M330 | 3300 | 5000 | 6000 | 7000 | 2650 | 8490 | 9240 | 9840 | 6/12 | |
| M350 | 3500 | 5000 | 6000 | 7000 | 2750 | 8520 | 9270 | 9870 | 6/12 | |
| M375 | 3750 | 5000 | 6000 | 7000 | 2875 | 8560 | 9310 | 9910 | 6/12 | |
| M400 | 4000 | 5000 | 6000 | 7000 | 3050 | 8730 | 9480 | 10080 | 6/12 | |
| M425 | 4250 | 5000 | 6000 | 7000 | 3175 | 8770 | 9520 | 10120 | 6/12 | |
| M450 | 4500 | 5000 | 6000 | 7000 | 3300 | 8810 | 9560 | 10160 | 6/12 | |
| M475 | 4750 | 5000 | 6000 | 7000 | 3425 | 8850 | 9600 | 10200 | 6/6 | |
| M500 | 5000 | 5000 | 6000 | 7000 | 3550 | 8890 | 9640 | 10240 | 6/6 | |
| M550 | 5500 | 4750 | 5700 | 6600 | 3850 | 9090 | 9840 | 10440 | 3/6 | |
| M600 | 6000 | 4400 | 5400 | 6400 | 4100 | 9170 | 9920 | 10520 | 3/6 | |

5-7t WIDE VIEW FULL FREE 2-STAGE MAST

| Mast model | Max fork height (mm) | Load capacity (load center 600mm) | | | Mast height, lowered (mm) | | Free lift (with backrest) (mm) | Service weight (kg) | | | Mast tilting angle (°) α / β |
|------------|----------------------|-----------------------------------|--------|--------|---------------------------|--------|--------------------------------|---------------------|--------|------|------------------------------|
| | | CPCD50 | CPCD60 | CPCD70 | CPCD50/60/70 | CPCD50 | | CPCD60 | CPCD70 | | |
| ZM250 | 2500 | 5000 | 6000 | 7000 | 2210 | 840 | 8470 | 9120 | 9820 | 6/12 | |
| ZM270 | 2700 | 5000 | 6000 | 7000 | 2310 | 940 | 8500 | 9150 | 9850 | 6/12 | |
| ZM300 | 3000 | 5000 | 6000 | 7000 | 2460 | 1090 | 8550 | 9200 | 9900 | 6/12 | |
| ZM330 | 3300 | 5000 | 6000 | 7000 | 2610 | 1240 | 8600 | 9250 | 9950 | 6/12 | |
| ZM350 | 3500 | 5000 | 6000 | 7000 | 2710 | 1340 | 8630 | 9280 | 9980 | 6/12 | |
| ZM375 | 3750 | 5000 | 6000 | 7000 | 2835 | 1465 | 8670 | 9320 | 10020 | 6/12 | |
| ZM400 | 4000 | 5000 | 6000 | 7000 | 3010 | 1640 | 8830 | 9480 | 10180 | 6/12 | |
| ZM425 | 4250 | 5000 | 6000 | 7000 | 3135 | 1765 | 8870 | 9520 | 10220 | 6/12 | |
| ZM450 | 4500 | 5000 | 6000 | 7000 | 3260 | 1890 | 8910 | 9560 | 10260 | 6/12 | |
| ZM475 | 4750 | 5000 | 6000 | 7000 | 3385 | 2015 | 8950 | 9600 | 10300 | 6/6 | |
| ZM500 | 5000 | 5000 | 6000 | 7000 | 3510 | 2140 | 8990 | 9640 | 10340 | 6/6 | |
| ZM550 | 5500 | 4750 | 5700 | 6700 | 3810 | 2440 | 9190 | 9840 | 10540 | 3/6 | |
| ZM600 | 6000 | 4400 | 5400 | 6400 | 4060 | 2690 | 9270 | 9920 | 10620 | 3/6 | |

Note: (1) 5-6t: the free lift without backrest 465mm increased,
(2) 7t: the free lift without backrest 310mm increased,

Load curve



CPCD50 CPCD60 CPCD70 CPCD85 CPCD100

Note: The vertical axis stands for load capacity and the horizontal axis stands for load center which is calculated from the front surface of the forks to the gravity of the standard load. The standard load means a cubic with 1200mm edge length. When mast is tilted forward, using non-standard forks or loading large goods, the load capacity will be reduced. The load capacity of standard mast at different load center can be known from this load chart.

5-7t WIDE VIEW FULL FREE 3-STAGE MAST

| Mast model | Max. fork height (mm) | Load capacity (load center 600mm) | | | Mast height, lowered (mm) | | Free lift (with backrest) (mm) | | Service weight (kg) | | | Mast tilting angle (°) α/β |
|------------|-----------------------|-----------------------------------|--------|--------|---------------------------|--|--------------------------------|--------|---------------------|-------|-----|----------------------------|
| | | CPCD50 | CPCD60 | CPCD70 | CPCD50/60/70 | | CPCD50 | CPCD60 | CPCD70 | | | |
| ZSM360 | 3600 | 4500 | 5600 | 6200 | 2335 | | 910 | 9130 | 9780 | 10460 | 6/6 | |
| ZSM400 | 4000 | 4500 | 5600 | 6200 | 2470 | | 1040 | 9190 | 9840 | 10520 | 6/6 | |
| ZSM435 | 4350 | 4500 | 5600 | 6200 | 2585 | | 1156 | 9250 | 9900 | 10560 | 6/6 | |
| ZSM480 | 4800 | 4500 | 5600 | 6200 | 2740 | | 1310 | 9440 | 10090 | 10750 | 6/6 | |
| ZSM500 | 5000 | 4500 | 5600 | 6200 | 2805 | | 1380 | 9470 | 10120 | 10780 | 3/6 | |
| ZSM540 | 5400 | 4200 | 5300 | 6000 | 2940 | | 1510 | 9540 | 10190 | 10950 | 3/6 | |
| ZSM600 | 6000 | 4000 | 5000 | 5500 | 3140 | | 1710 | 9630 | 10280 | 11030 | 3/6 | |
| ZSM650 | 6500 | 3600 | 4300 | 4500 | 3405 | | 1975 | 9740 | 10350 | 11250 | 3/6 | |
| ZSM700 | 7000 | 2800 | 3500 | 3700 | 3515 | | 2085 | 4450 | 10500 | 11360 | 3/6 | |

Note: (1) 5-6t: the free lift without backrest 380mm increased,
(2) 7t: the free lift without backrest 225mm increased.

8.5-10t WIDE VIEW MAST

| Mast model | Max. fork height (mm) | Load capacity (load center 600mm) | | Mast height, lowered (mm) | | Service weight (kg) | | Mast tilting angle (°) α/β |
|------------|-----------------------|-----------------------------------|---------|---------------------------|---------|---------------------|---------|----------------------------|
| | | CPCD85 | CPCD100 | CPCD85 | CPCD100 | CPCD85 | CPCD100 | |
| M250 | 2500 | 8500 | 10000 | 2450 | 2600 | - | - | 6/12 |
| M270 | 2700 | 8500 | 10000 | 2550 | 2700 | - | - | 6/12 |
| M300 | 3000 | 8500 | 10000 | 2700 | 2850 | 11550 | 12660 | 6/12 |
| M330 | 3300 | 8500 | 10000 | 2850 | 3000 | 11610 | 12725 | 6/12 |
| M350 | 3500 | 8500 | 10000 | 2950 | 3100 | 11650 | 12770 | 6/12 |
| M375 | 3750 | 8500 | 10000 | 3075 | 3225 | 11690 | 12820 | 6/12 |
| M400 | 4000 | 8500 | 10000 | 3250 | 3400 | 11900 | 12960 | 6/12 |
| M425 | 4250 | 8500 | 10000 | 3375 | 3525 | 11950 | 13020 | 6/12 |
| M450 | 4500 | 8500 | 10000 | 3500 | 3650 | 11990 | 13070 | 6/12 |
| M475 | 4750 | 8200 | 10000 | 3625 | 3775 | 12040 | 13130 | 6/6 |
| M500 | 5000 | 8200 | 10000 | 3750 | 3900 | 12090 | 13180 | 6/6 |
| M550 | 5500 | 7850 | 9000 | 4050 | 4200 | 12330 | 13420 | 3/6 |
| M600 | 6000 | 7400 | 8000 | 4300 | 4450 | 12420 | 13530 | 3/6 |

8.5-10t WIDE VIEW FULL FREE 2-STAGE MAST

| Mast model | Max. fork height (mm) | Load capacity (load center 600mm) | | Mast height, lowered (mm) | | Free lift (with backrest) (mm) | | Service weight (kg) | | Mast tilting angle (°) α/β |
|------------|-----------------------|-----------------------------------|---------|---------------------------|---------|--------------------------------|---------|---------------------|---------|----------------------------|
| | | CPCD85 | CPCD100 | CPCD85 | CPCD100 | CPCD85 | CPCD100 | CPCD85 | CPCD100 | |
| ZM250 | 2500 | 8500 | 10000 | 2450 | 2600 | 1090 | 1300 | 11290 | - | 6/12 |
| ZM270 | 2700 | 8500 | 10000 | 2550 | 2700 | 1190 | 1400 | 11560 | - | 6/12 |
| ZM300 | 3000 | 8500 | 10000 | 2700 | 2850 | 1340 | 1550 | 11675 | 12980 | 6/12 |
| ZM330 | 3300 | 8500 | 10000 | 2850 | 3000 | 1490 | 1700 | 11720 | 13070 | 6/12 |
| ZM350 | 3500 | 8500 | 10000 | 2950 | 3100 | 1590 | 1800 | 11780 | 13140 | 6/12 |
| ZM375 | 3750 | 8500 | 10000 | 3075 | 3225 | 1715 | 1925 | 11840 | 13220 | 6/12 |
| ZM400 | 4000 | 8500 | 10000 | 3250 | 3400 | 1890 | 2100 | 12090 | 13380 | 6/12 |
| ZM425 | 4250 | 8500 | 10000 | 3375 | 3525 | 2015 | 2225 | 12160 | 13460 | 6/12 |
| ZM450 | 4500 | 8500 | 10000 | 3500 | 3650 | 2140 | 2350 | 12230 | 13530 | 6/12 |
| ZM475 | 4750 | 8200 | 10000 | 3625 | 3775 | 2265 | 2475 | 12300 | 13620 | 6/6 |
| ZM500 | 5000 | 8200 | 10000 | 3750 | 3900 | 2390 | 2600 | 12370 | 13690 | 6/6 |
| ZM550 | 5500 | 7850 | 9000 | 4050 | 4200 | 2690 | 2900 | 12670 | 13980 | 3/6 |
| ZM600 | 6000 | 7400 | 8000 | 4300 | 4450 | 2940 | 3150 | 12810 | 14140 | 3/6 |

Note: (1) 8.5t: the free lift without backrest 222mm increased,
(2) 10t: free lift without backrest,

8.5-10t WIDE VIEW FULL FREE 3-STAGE MAST

| Mast model | Max. fork height (mm) | Load capacity (load center 600mm) | | Mast height, lowered (mm) | | Free lift (with backrest) (mm) | | Service weight (kg) | | Mast tilting angle (°) α/β |
|------------|-----------------------|-----------------------------------|---------|---------------------------|---------|--------------------------------|---------|---------------------|---------|----------------------------|
| | | CPCD85 | CPCD100 | CPCD85 | CPCD100 | CPCD85 | CPCD100 | CPCD85 | CPCD100 | |
| ZSM360 | 3600 | 7500 | 8000 | 2450 | 2570 | 1090 | 1150 | 11940 | 13290 | 6/12 |
| ZSM400 | 4000 | 7500 | 8000 | 2575 | 2700 | 1215 | 1280 | 12010 | 13350 | 6/12 |
| ZSM435 | 4350 | 7500 | 8000 | 2700 | 2820 | 1340 | 1400 | 12080 | 13410 | 6/12 |
| ZSM480 | 4800 | 7500 | 7500 | 2850 | 2970 | 1490 | 1550 | 12160 | 13470 | 6/6 |
| ZSM500 | 5000 | 7500 | 7500 | 2950 | 3035 | 1590 | 1615 | 12230 | 13520 | 3/6 |
| ZSM540 | 5400 | 7000 | 7000 | 3075 | 3225 | 1715 | 1805 | 12300 | 13590 | 3/6 |
| ZSM600 | 6000 | 6400 | 6000 | 3375 | 3425 | 2015 | 2005 | 12640 | 13670 | 3/6 |
| ZSM650 | 6500 | 5800 | 5600 | 3600 | 3590 | 2240 | 2170 | 12740 | 13960 | 3/6 |
| ZSM700 | 7000 | 4800 | - | 3750 | 3855 | 2390 | 2435 | 12830 | - | 3/6 |

Note: (1) 8.5t: the free lift without backrest 172mm increased,
(2) 10t: free lift without backrest,

Note: The service weight in the table is the weight of the truck assembled with XiChai engine.